

# R - Great Wall of China



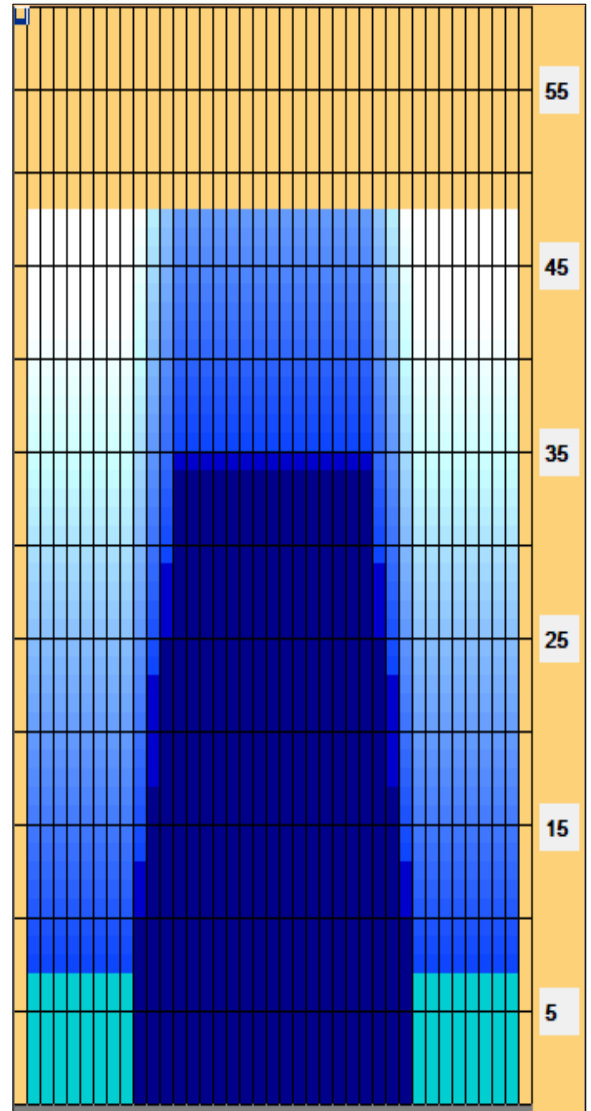
**Oil Pattern Distance:** 48 Feet      **Reverse Brush Drop:** 43 Feet      **Oil Per Board:** 50 uL  
**Forward Oil Total:** 16.1 mL      **Reverse Oil Total:** 9.2 mL      **Volume Oil Total:** 25.3 mL  
**Forward Boards Crossed:** 322 Boards      **Reverse Boards Crossed:** 184 Boards      **Total Boards Crossed:** 506 Boards

	Start	Stop	Loads	Speed	Crossed	Start	End	Feet	T.Oil
1	2L	2R	4	18	148	0.0	7.6	7.6	7400
2	10L	10R	1	18	21	7.6	10.1	2.5	1050
3	11L	11R	3	18	57	10.1	17.7	7.6	2850
4	12L	12R	3	18	51	17.7	25.3	7.6	2550
5	13L	13R	3	22	45	25.3	34.6	9.3	2250
6	2L	2R	0	22	0	34.6	42.0	7.4	0
7	2L	2R	0	26	0	42.0	48.0	6.0	0

	Start	Stop	Loads	Speed	Crossed	Start	End	Feet	T.Oil
1	2L	2R	0	26	0	48.0	35.0	-13.0	0
2	13L	13R	2	22	30	35.0	28.8	-6.2	1500
3	12L	12R	2	22	34	28.8	22.6	-6.2	1700
4	11L	11R	3	22	57	22.6	13.3	-9.3	2850
5	10L	10R	2	18	42	13.3	8.2	-5.1	2100
6	10L	10R	1	14	21	8.2	6.3	-1.9	1050
7	2L	2R	0	14	0	6.3	0.0	-6.3	0

Conditioner:  
 Type In or Select One  
  
 TransferType:  
 Type In or Select One

- Forward
- Reverse
- Combined
- Buff



<p> Designed for FLEX | GREAT WALL OF CHINA - 5448 | Long associated with a blocked lane condition, the Great Wall of China pattern is the wall of all walls. At 48’ in length, the best way to attack this pattern is up against the wall of oil instead of jumping to the drier part of the lane. Once lined up properly on the Great Wall of China, it will be almost impossible to cross over to the other side!</p>

Item Description	3L-7L:18L-18R Outside Track:Middle	8L-12L:18L-18R Middle Track:Middle	13L-17L:18L-18R Inside Track:Middle	18L-18R:17R-13R Middle: Inside Track	18L-18R:12R-8R Middle:Middle Track	18L-18R:7R-3R Middle:Outside Track
Track Zone Ratio	6	2.45	1	1	2.45	6

